

Ambulance Train

Words and Music by J Cunningham

In Free Time

A D A C#m

[V.1] Now peo-ple who know a-bout Wol-ver-ton, May ask what we've done for the

5 D A Bm C#m D A

poco accel.

war. Well some of our lads are o-ver in France, And we have-n't been a-sleep on the

9 **A tempo** ♩. = 66 [CHORUS] A E A A⁷ D

floor. Come and see our new Am-bu-lance Train La-test in-ven-tion of the

14 E A E D A

En-gi-neer's Brain, There's a cross on the roof and it's paint-ed in kha-ki, They on-ly missed

17 G E A A/C# D E A A D

In Free Time

one thing and that was a bar. [V.2] Now the train has six-teen long

23 A C#m D A poco accel. Bm

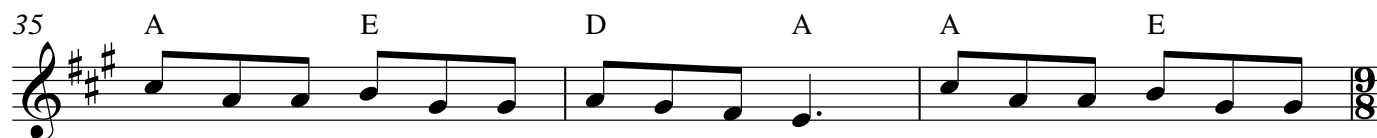
ve-hi-cles. It mea-sures some nine hun-dred feet. Its three hun-dred and six-ty two

27 C#m D A E **A tempo** [CHORUS]

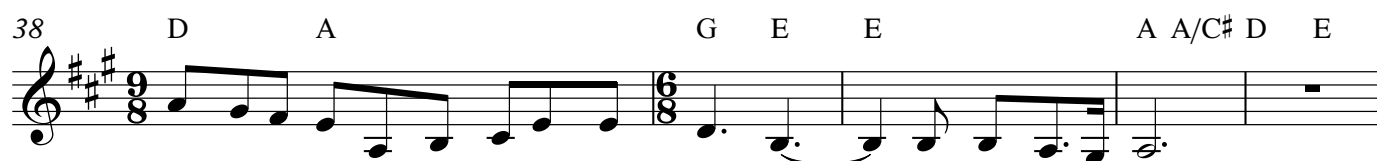
pa-tients and staff will en-joy'lec-tric light and steam heat. Come and

31 A E A A⁷ D E

see our new Am-bu-lance Train La test in-ven-tion of the en-gi-neer's brain, To



keep down in - fec - tion the seats are all hard. Cross on the roof and it's



paint-ed in kha-ki, They on-ly missed one thing and that was a bar.

In Free Time



V.3 There are cars for the ly-ing down woun ded, And two for in-fec-tious dis-

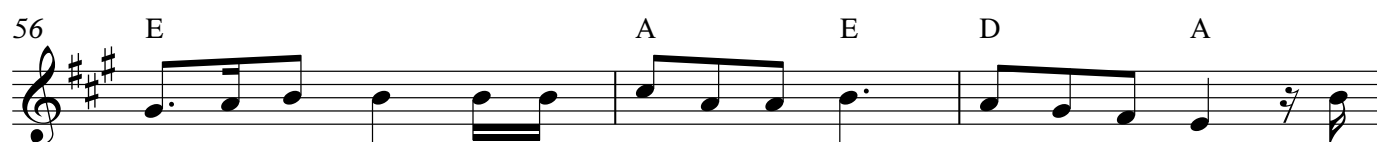


ease, A Per-son-nel car, a Staff car, a cou-ple of kitch-ens, For mut-ton and hot mush-y

A tempo



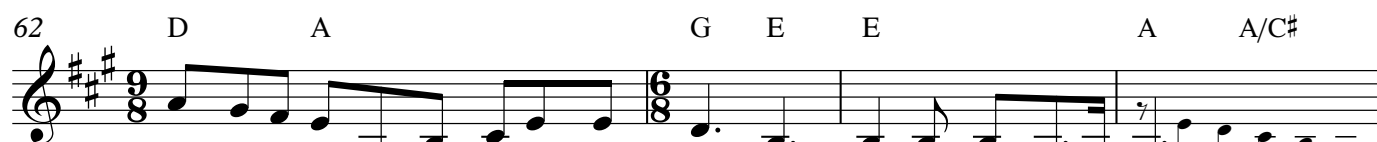
peas. Come and see our new Am-bu-lance Train La-test in-ven-tion of the



en - gi-neer's brain, There's a cool - er to freeze cheese for the guard. To



keep down in - fec - tion the seats are all hard. Cross on the roof and it's



paint-ed in kha-ki, They on-ly missed one thing and that was a bar.

In Free Time



V.4 Now the in-side is of white en

71 A C#m D A Bm
a-mel, So dirt won't col-lect a-ny- where, And there's not one cor-ner the

75 C#m D A E **A tempo** CHORUS
length of the train, So a spi-der would die of des- pair. Come and

79 A E A A⁷ D E
see our new Am-bu-lance Train La-test in-ven-tion of the en-gi-neer's brain, There's

83 A E D A A E D A
some-where to spit and stub out your ci-gar, Cheese for the guard, but the seats are all hard.

87 A E D A G E E
Cross on the roof and it's paint-ed in kha-ki, They on-ly missed one thing_ and that was a

91 A A/C# D E A D A
bar. **In Free Time**
[V.5] The phar-ma-cy car will im-press you, With its

96 C#m D A Bm
me - di - cal com-forts store. There's an of-fice for the of - fi - cer and a

99 C#m D A E **A tempo** CHORUS
drawer for his drawers, And a treat-ment com-part-ment next door. Come and

104 A E A A⁷ D
see our new Am - bu - lance Train La - test in - ven - tion of the

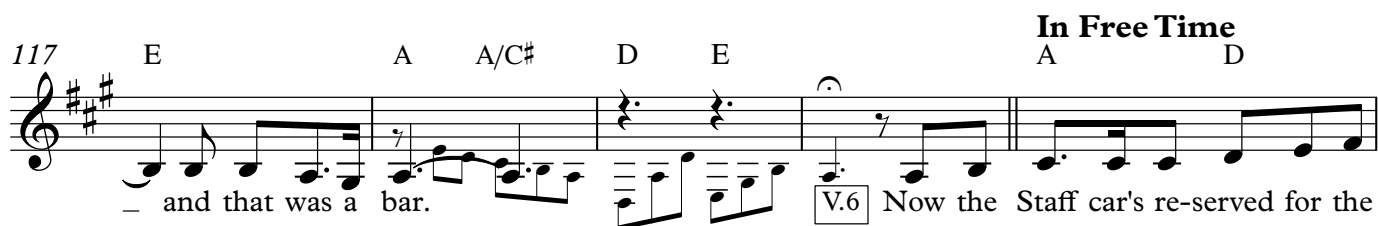
107 E A E
en - gi - neer's brain, There's an op - er - a - ting ta - ble in the



Phar-ma-cy car. Some-where to spit and stub out your ci-gar. Cheese for the guard, but the



seats are all hard. Cross on the roof and it's paint-ed in kha-ki, They on-ly missed one thing



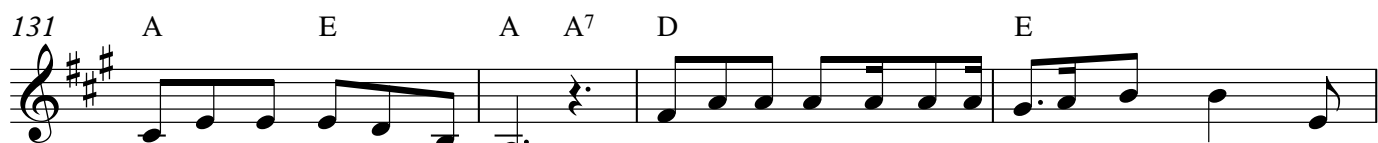
— and that was a bar. V.6 Now the Staff car's re-served for the



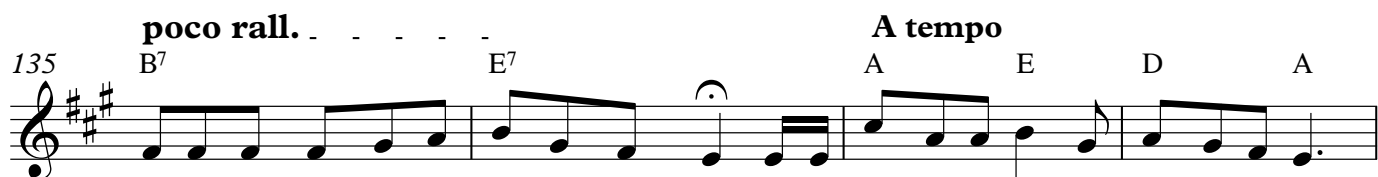
doc-tors, And the nur-ses that sleep in there too, But their beds are set at each



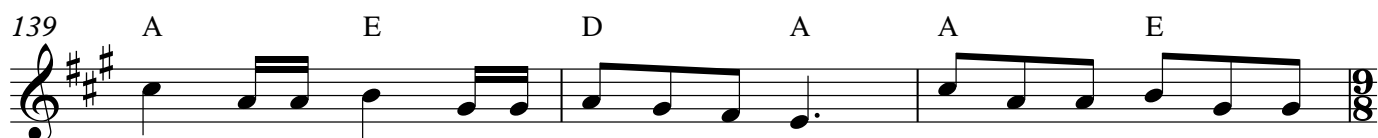
end of the coach Fra-ter-ni-sa-tion won't do! Come and



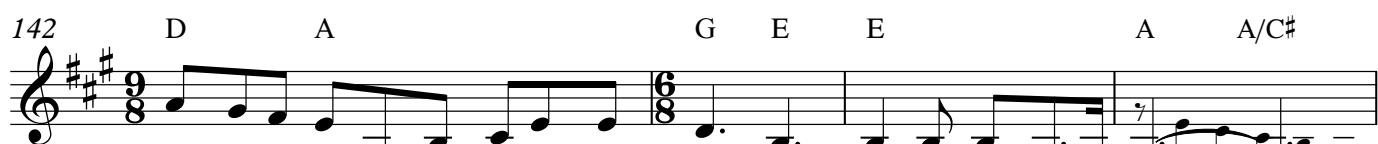
see our new Am-bu-lance Train La-test in-ven-tion of the en-gi-neer's brain, There's



se-pa-rate quar-ters for nur-ses, don't laugh. In the phar-ma cy car, stub out your ci gar.



Cheese for the guard, but the seats are all hard. Cross on the roof and it's



paint-ed in kha-ki, They on-ly missed one thing— and that was a bar.

In Free Time

146 D E A D A

V.7 So our woun-ded will be treat-ed in com-fort, In this

150 C#m D A Bm C#m D ,

field hos-pi-tal up-on rails.No more jolt-ing and jum-ping and lurch-ing and bump-ing. This is

154 **A tempo** A E CHORUS A E A A7

lux-u-ry in ev-ery de-tail. Come and see our new Am-bu-lance Train

160 D E B7 E7

La test in-ven-tion of the en-gi-neer's brain, It's as good as the Ritz for the pa-tients and staff.

164 **poco rall.** B7 E7 **A tempo (a bit slower)** A E D A

Se-pa-rate quar-ters for nur-ses, don't laugh. In the phar-ma-cy car, stub out your ci-gar.

168 A E D A A E

Cheese for the guard, but the seats are all hard. Cross on the roof and it's

171 D A G E E

paint-ed in kha - ki, They on - ly missed one thing — and that was a

174 A A/C# D E A D E A6

bar.